

Your future starts here >>>

Did you know that the number of skilled people employed in the offshore wind sector is set to triple by 2030.

There is also a huge national shortage of Power Engineers, who are responsible for designing, developing and maintaining electrical systems and equipment.

Get qualified now and gain a competitive edge to access more and better opportunities across engineering and renewables.

- ✓ Are you looking for a full-time course with real job prospects when you leave school?
- ✓ Are you keen to learn and willing to work hard?
- ✓ Are you ambitious and motivated to succeed?

Perfectly positioned at the heart of the North East's growing power engineering sector, Northumberland Skills is opening its latest campus at the Energy Central Learning Hub, Port of Blyth.

Here, you'll find yourself surrounded by new and exciting developments, as you grow your own skills, confidence and career ambitions.

Enrol now on a full-time Advanced Manufacturing Engineering qualification at Energy Central

<<< Explore this opportunity further



Get in touch

- ✓ Enrol now and secure your place for September.
- ✓ If you have any questions, contact the team on:

- ☎ 01670 622 099
- ✉ learn@northumberland.gov.uk
- 🏠 Energy Central, Port of Blyth, NE24 3PB
- 🌐 northumberlandskills.co.uk/energy

Dexter's success story started here >>>



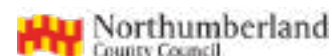
"This course sounded like an amazing opportunity. The facilities, equipment and the lecturers are all brilliant."

You get lots of independence which I think is good for preparing you for work. I'd definitely recommend Northumberland Skills to anyone looking to start a career in engineering."

Former Morpeth KEVI High School student, Dexter Sayers, 17, from Longhirst.



Delivering on behalf of



SCHOOL LEAVERS' MINI GUIDE 2024-25

FAST FORWARD YOUR FUTURE



WITH AN ADVANCED
MANUFACTURING
ENGINEERING COURSE



Did you know...?

Energy Central represents an investment of over £26million to inspire, train and deliver routes to employment for you

What you will study

City & Guilds Diploma in Advanced Manufacturing Engineering

Entry requirements

You'll need a minimum of three GCSEs at grade 3 or above. (If you need support with your English and maths grades, we offer Functional Skills support and GCSE resits.)

Study units

- Complying with statutory regulations and organisational safety requirements
- Working efficiently and effectively in an engineering environment
- Using and communicating technical information
- Conducting business improvement techniques
- Maintaining electrical equipment/systems
- Producing mechanical assemblies
- Assembling and testing fluid power systems
- Maintaining fluid power systems
- Assembling, wiring and testing electrical panels/components mounted in enclosures
- Fitting

Progression and careers

Our Advanced Manufacturing Engineering course is designed to support learners to progress to the next level, open up opportunities with employers and apprenticeship training programmes.

FREE enrolment events

Explore our brand new campuses at Port of Blyth, including the new Energy Central Site and our Welding & Fabrication Training Centre at an upcoming enrolment event.

- 10am-1pm, Saturday 23rd March 2024
- 4pm-7pm, Tuesday 23rd April 2024
- 10am-1pm, Saturday 25th May 2024



Meet your lecturers

This is your opportunity to ask any questions, find out more about the wealth of experience and employer connections your lecturers have, as well as how they will support you to succeed and progress.



See the facilities

Our state-of-the-art facilities have been designed to enhance your learning experience, ensuring you gain the skills you need to succeed in the industry quickly and confidently.



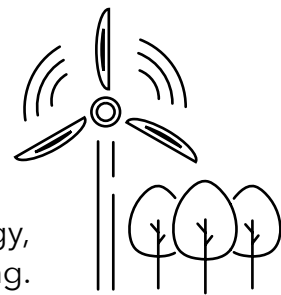
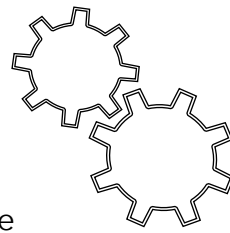
Find out more about your course

Talk to the team about your career aspirations and find out more about our industry-recognised courses available from September 2024.

Why choose us

Located at Energy Central, the premier offshore energy base at Port of Blyth, the Learning Hub offers the next generation of power engineers, maintenance engineers and technicians the opportunity to progress quickly into real job opportunities or further training.

You'll be in good company, with our Welding and Fabrication Training Centre right next door, as well as a cluster of innovative businesses operating in sub-sectors across renewable energy, subsea engineering and advanced manufacturing.



Scan the QR code on the right or visit: northumberlandskills.co.uk/energy for further details about courses, facilities and open events.

